



JLI Mobilisation of Local Faith
Communities Hub Webinar:
May 15
9am ET /1pm GMT



photo credit: ICM

Can Faith Transform Poverty?

Impact of a Christian Values Program on Economic
Outcomes in the Philippines- RCT Results

Speakers:

- Lincoln Lau, PhD, International Care Ministries (ICM)
- James Choi, PhD, Yale University

Discussion led by Mobilisation Hub Co-chair:

- Andrea Kaufmann, World Vision International

Webinar Outline

- Intro to JLI Mobilisation of LFCs Learning Hub
- Introduction to Speakers
- Presentation from Lincoln Lau PhD, ICM
- Presentation from James Choi PhD, Yale
- Next steps with ICM
- Discussion and Q&A
- Join the Hub

Speakers

Lincoln Lau PhD, International Care Ministries

James Choi, PhD, Yale University

Can Faith Transform Poverty? Impact of a Christian Values Program on Economic Outcomes in the Philippines

Lincoln Lau

JLI Mobilisation of Local Faith Communities Hub Webinar

May 15, 2018



International Care Ministries (ICM) - Background

- International Care Ministries (ICM) is a faith-based NGO in the Philippines
 - Core program is an adult education-based poverty alleviation intervention called *Transform*
 - Target are households living in 'ultrapoverty' defined as <\$0.50 USD per person per day
 - Approximately 1,000 communities of 30 households receive this program annually through local churches



Transform Program



Education
Fostering attitudes and behaviors for healthy relationships

Social Support
Facilitating access to government services

Building Connectedness
Strengthening social networks across the community

Personal Character
Improving self-worth, confident decision-making and hope for the future



Education
Promoting healthy life practices to increase family well-being

Medical Mercy Fund
Removing barriers to quality health care

Treatment Packs
Providing appropriate treatment for common health issues

Fight Hunger
Delivering nutritional support for families



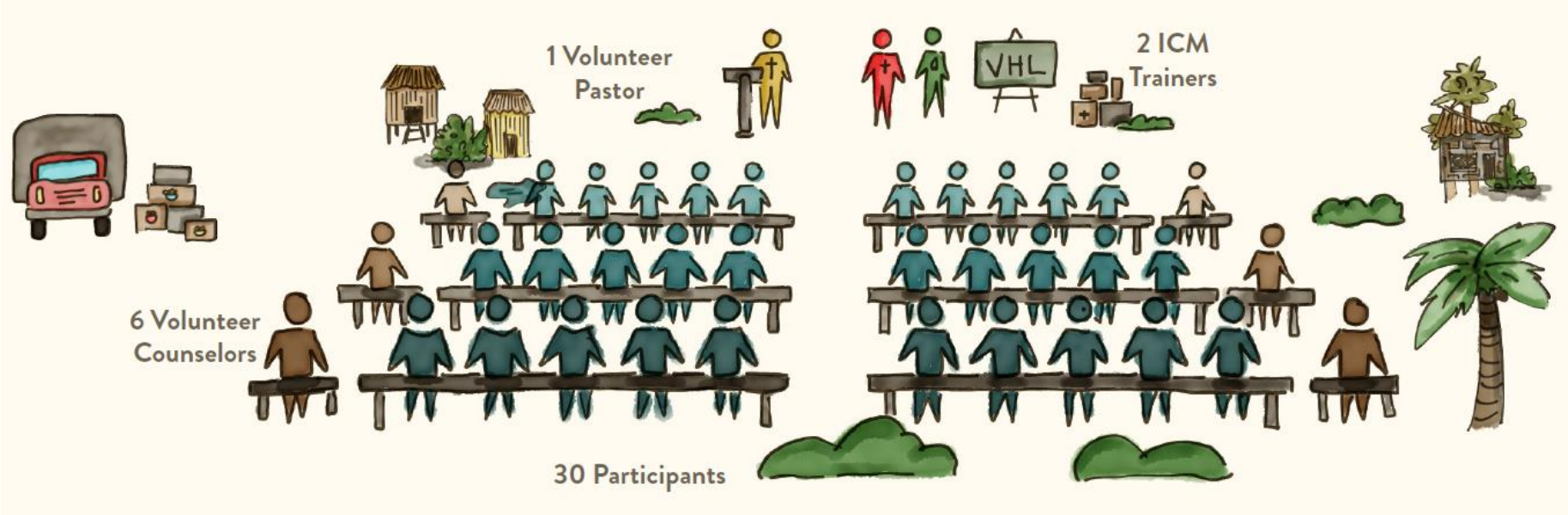
Education
Nurturing entrepreneurial skills for sustainable productivity

Savings Group
Supporting individual and group savings for access to capital

Business-in-a-Box
Offering in-kind microloans to launch successful businesses

Financial Inclusion
Establishing mobile banking accounts for access to financial services

Transform Program



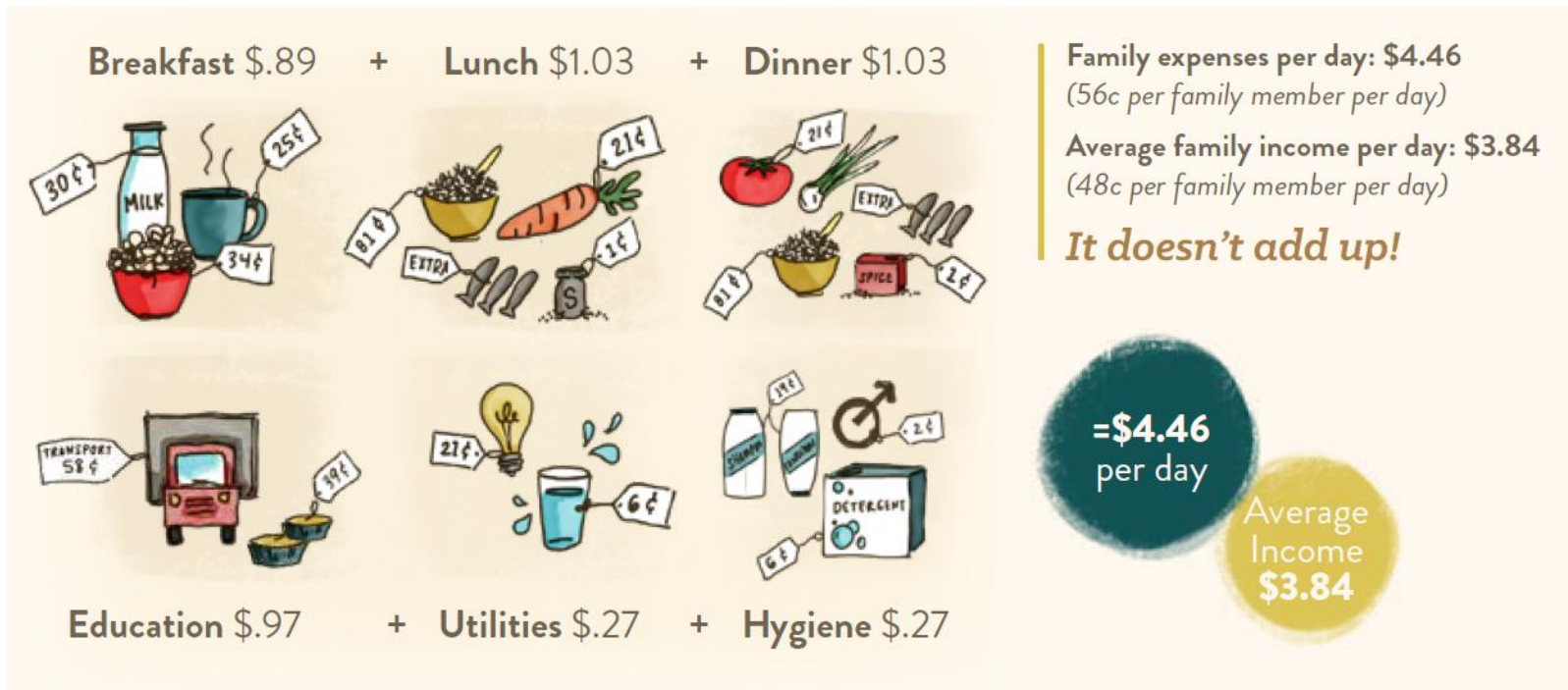
Transform Program

Baseline Description



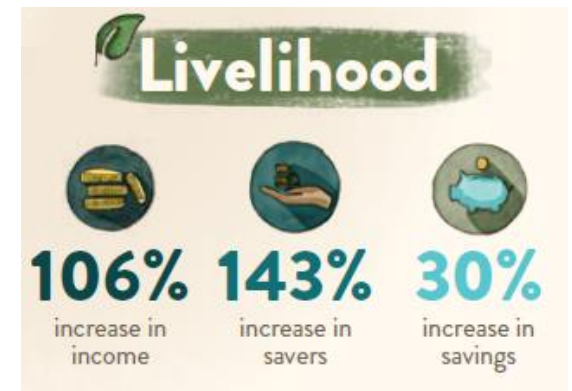
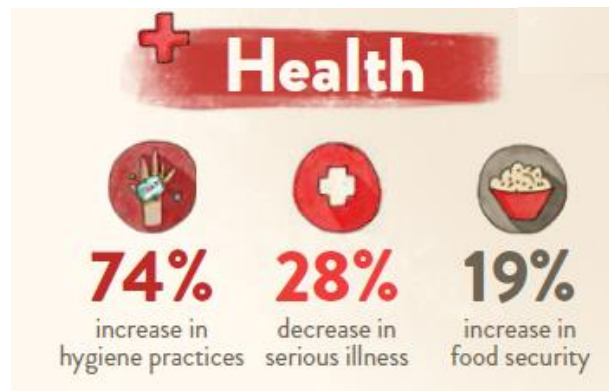
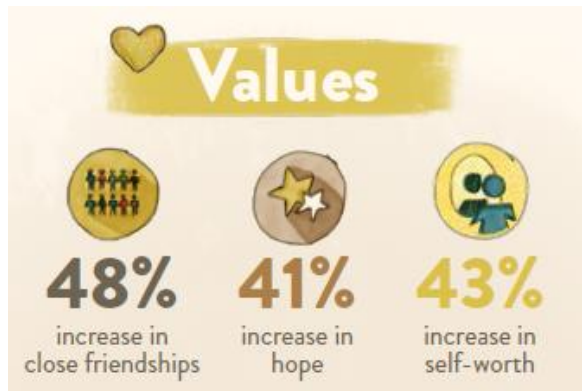
Transform Program

Daily Expenses of an Ultrapoor Household

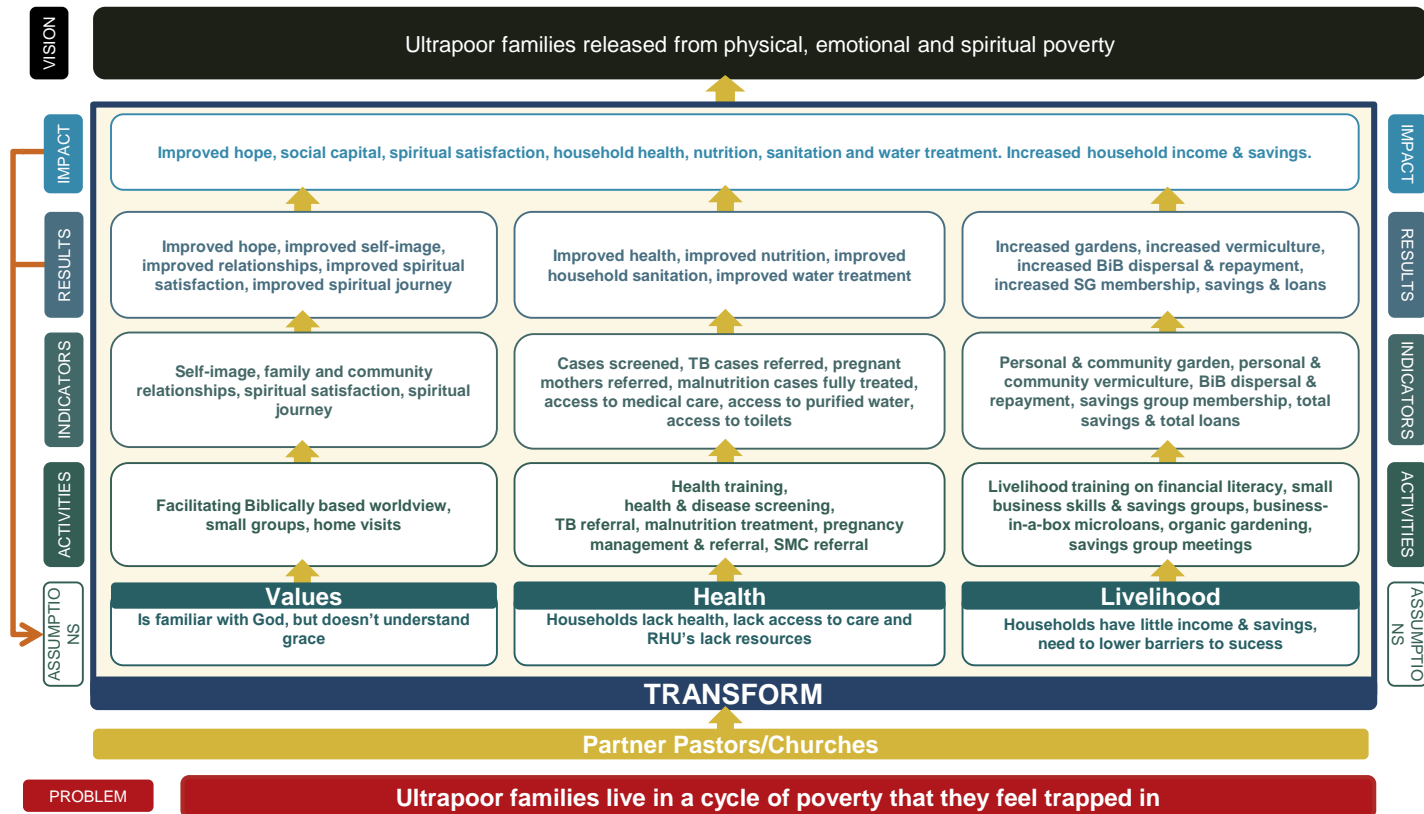


Transform Program

Longitudinal (Pre-Post) Survey Results



Transform Program – Theory of Change



ICM Discussion Points

- Opportunities
 - Policy Implications
 - 'legitimizing' FBO programs
- Challenges
 - The impact of an RCT on partners
 - Translating findings into operational strategy
- Scale up

Comments &
Questions?



Join the *Mobilisation of Local Faith Communities Learning Hub*

lfc.jliflc.com

Next Webinar: June 19, 2018 at 9am ET (1pm GMT/ 2pm UK)

Sustainable Development Goals and Faith

Emma Tomalin (University of Leeds), Jörg Haustein (SOAS) &
Elizabeth Garland (Salvation Army)

Thank you!