



**March 13**

**9am ET /1pm GMT**

**JLI Mobilisation Hub Webinar**



## **Disaster Risk Reduction and Management**

**Effectively Engaging Local Faith Leaders**

---

Speakers: Nagulan Nesiah, Episcopal Relief & Development, Lauren Kejeh, Tearfund and Lydia Tanner, The Research People  
Discussion led by Mobilisation Hub Co-chairs  
Andrea Kaufmann, World Vision and Catriona Dejean, Tearfund

[lfc.jliflc.com](http://lfc.jliflc.com)

# Webinar Outline

- Intro to JLI Mobilisation of LFCs Learning Hub
- Introduction to Speakers
- Presentation from Tearfund
- Presentation Episcopal Relief & Development, Nagulan  
Nesiah, Case study of Sri Lanka
- Q&A
- Join the Hub

# Mobilisation of Local Faith Communities Learning Hub

## Hub Co-chairs:

**Catriona Dejean**  
Tearfund  
Head of Impact and Effectiveness

**Andrea Kaufmann**  
World Vision International  
Director, Faith Partnerships

## Hub work

- Collaborative consultation to create Theory of Change in 2014
- Partnerships strengthened (ex. ICM & OAIC on M&E)
- Platform for knowledge sharing through webinars
- Consolidation of methods of engagement underway for a journal article

JOINT LEARNING INITIATIVE ON FAITH & LOCAL COMMUNITIES - THEORY OF CHANGE

**IMPACT:** Empowered communities where all people, including the most vulnerable, enjoy well-being in just and caring relationships with God, each other and all creation.



# Local Faith Actors across the humanitarian- development nexus

LFA's have a continuous presence ...

pre-, during, and post-crisis

Baiturrahman Grand Mosque, Banda Aceh, Indonesia



**After the tsunami in 2004**

Photo: AP



**2011**

Photo: Al Jazeera/EPA



## Localizing Response to Humanitarian Need: THE ROLE OF RELIGIOUS AND FAITH-BASED ORGANIZATIONS

- 142 participants from 36 countries
- Peer to Peer Learning Exchange format
- Collaborative Call to Action process





# Disasters and the Local Church

---

13th March 2018

Lauren Kejeh, Impact and Learning Officer, Tearfund

Lydia Tanner, Consultant, The Research People

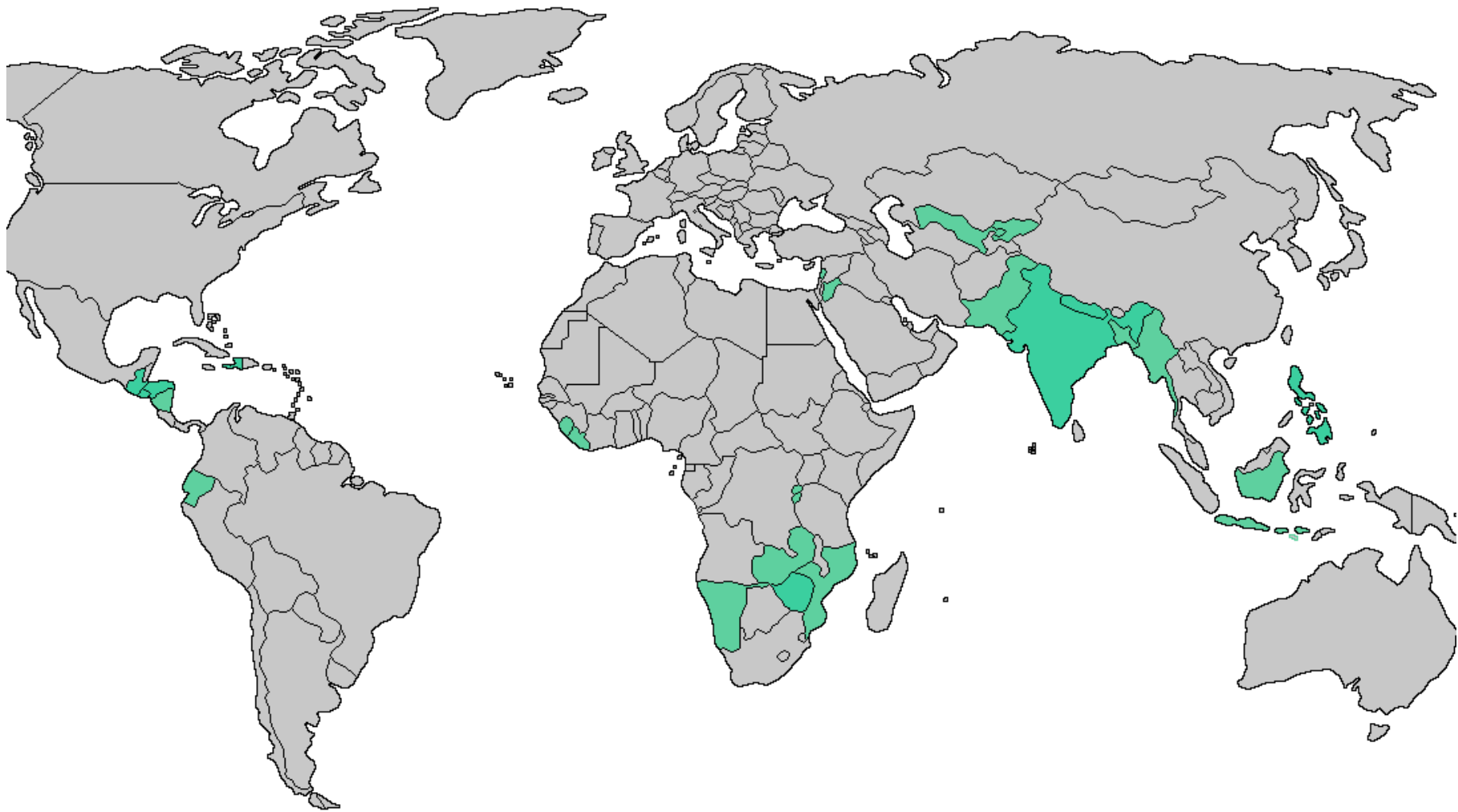
# Introduction

- Coverage of guidelines and training
- Have partners conducted training in their local community
- What capacities have been built in church leaders
- Where has capacity building been most significant i) response ii) rehabilitation iii) mitigation iv) preparedness?
- Has this challenged the behaviours and attitudes of (individual) participants?
- Has our training led to locally owned disaster risk reduction? If so, how?

# Methodology

METHOD	DETAIL		
Document Review	<ul style="list-style-type: none"><li>Literature on faith and humanitarian response</li><li>Training reports</li></ul>		
KIIs	Tearfund <ul style="list-style-type: none"><li>10 Tearfund staff</li><li>10 in-country staff</li></ul>	Partners & Churches <ul style="list-style-type: none"><li>7 complete</li><li>c.10 outstanding</li></ul>	Other
Survey	13 responses		
Findings Workshop	Discussion of emerging findings with Tearfund		





# Individual Change

## IDENTIFYING THAT CHURCHES HAVE A ROLE TO PLAY

“Generally speaking, pastors in this area are not too open to work on these issues unless it is heavily framed within a biblical perspective. The other tools we have used include bible reflections but are written for a more general audience. I favour this guide for church leaders because it shows bigger content in terms of a bible perspective”

“there is a religious conference and it was seen as really highbrow: everyone will frown if you take half an hour to talk about disasters because it was not about the spiritual development of the church. But now they are discussing it - seeing that it is part of their role to respond to disasters.”

# Individual Change

CHURCH LEADERS SETTING A  
PERSONAL EXAMPLE

- Preparing for risks in own homes or families

# Church & Community Change

## 1. BUILDING RELATIONSHIPS

- Establishing committees
- Working with secular organisations and local Government in Guatemala
- National level networking in the Philippines

# Church & Community Change

## 2. PREPAREDNESS

- Training first aiders in Nepal
- Collecting seeds to prepare for destroyed harvests in central America
- Sharing information on protecting yourself during earthquakes in Nepal
  
- “Any community has self agency but the training and the talks we have done have helped us to be more organised and reflect on planning for the future”

# Church & Community Change

## 3. UNDERSTANDING OF VULNERABILITY

- Interviewees spoke of more holistic approach to understanding vulnerability
- Practical activities identifying risks to the church – eg. in Philippines
- Actively seeking out vulnerable people – eg Central America

# Church & Community Change

## 4. NEEDS ASSESSMENT

- Needs assessment in Guatemala led to partnering with Tearfund

“the most useful things that have impacted from the guide are needs and risk assessment and how to conduct them”

# Church & Community Change

## 5. RESPONSE

- Churches able to identify their own resources

“When people were stuck the church the [new] disaster response committee agreed to open the church and offered food and a place to sleep for all those people who were not able to return to their homes for many days. I think the church responding in this way was a direct consequence of the training a few months earlier... They were given training but also camping maps that allowed them to host people.”



# Church & Community Change

## 6. RECONSTRUCTION

- Reconstruction of houses in Zimbabwe after flooding
- Mindful about where to rebuild church structures in the Philippines

# Mobilizing Faith Communities

## A Sri Lankan Case Study

Nagulan Nesiah, Senior Program Officer



# Agenda

- Our partners
- Our methodology
- Sri Lanka case study



# Healing a Hurting World

Each year, Episcopal Relief & Development works with more than **3 million people** in over **40 countries** through programs in four core areas.



Alleviating hunger and improving food supply

Creating economic opportunities and strengthening communities



Promoting health and fighting disease

Responding to disasters and rebuilding communities



# Who We Work With: Anglican Partners and Other Faith Groups

- The Anglican Church and its member churches are present in 165 countries and claim membership of 85 million people on six continents.
- Churches have a history and commitment to respond to disasters before, during and long after a disaster leaves the news.
- Churches offer comfort, solidarity, sustainability and local accountability in a response.

# How We Work: Strong Asset-Based Approaches

- Map strengths and assets
- Promote a vision for the community
- Support risk analysis
- Ensure community-based & community-lead



# Disaster Risk Reduction & Management (DRRM) – why it was developed

- 2010 review
- Strengths: *spontaneous, instinctive, respected*
- Opportunities: *expand reach, enhance effectiveness, leverage other stakeholders*



# Sri Lanka Case Study: Training Curriculum

- Contextual Curriculum:
  - 18 months
  - 7 one-week module
  - 2-month practicum
- To date: Trained 43 trainers and 92 committee members (clergy and lay)





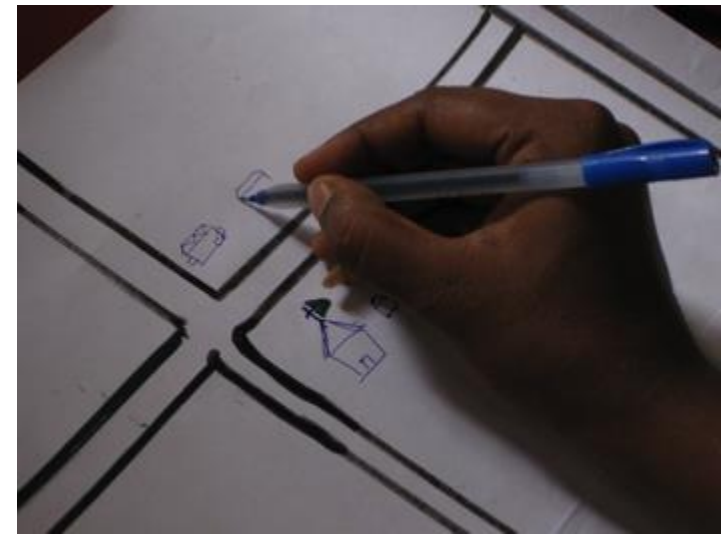
# Sri Lanka Case Study: Methodology



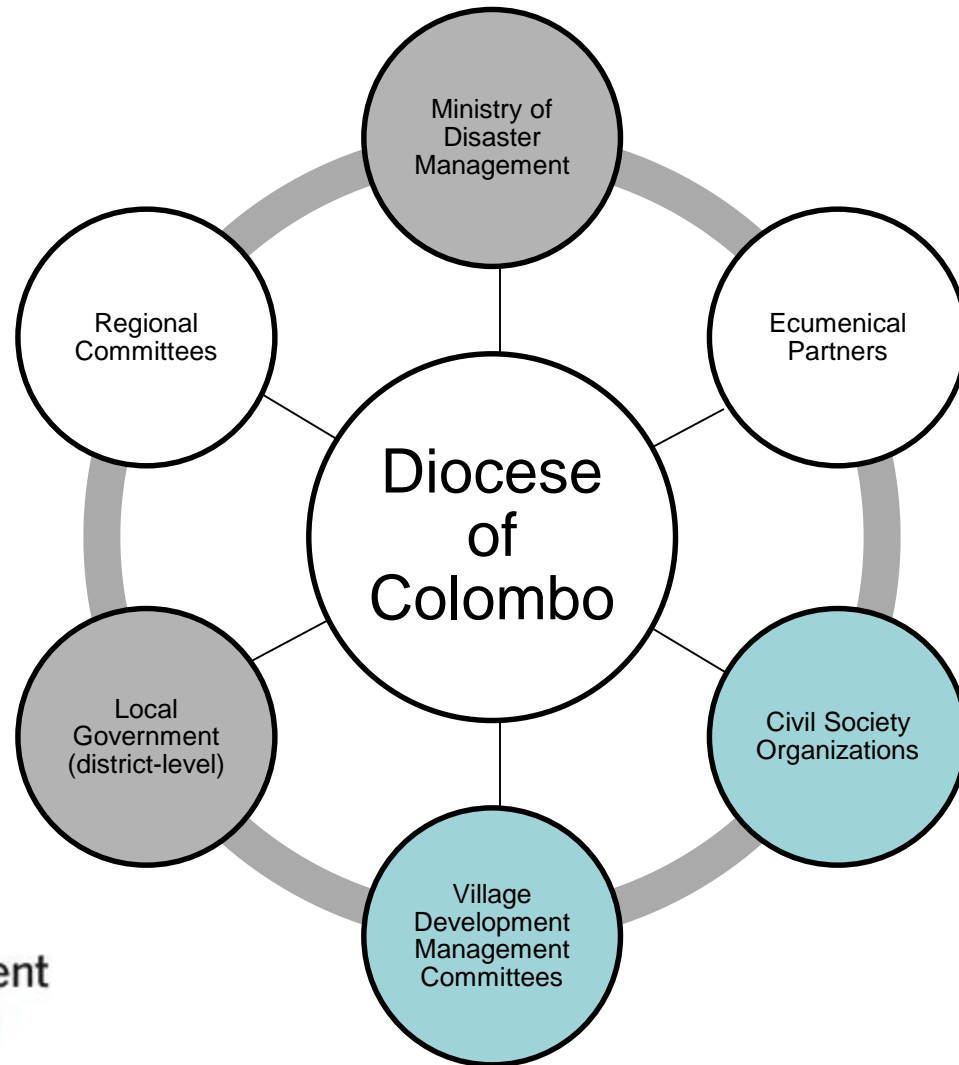
<p><b>Mobilizing to Assess and Analyze Risk</b></p>	<p><b>1. Local Faith Communities Organize Themselves into Disaster Committees</b> Committees use participatory workshops to build DRRM awareness and lead in designing, implementing and monitoring a disaster resilience work plan</p> <p><b>2. Communities take Action to Reduce Risk of Disaster in their Communities</b> Committees use Episcopal Relief &amp; Development's Asset Recognition and Reinforcement continuum to map risks, which helps customize work plans to prepare for and mitigate against disasters using their communities' own assets.</p>
<p><b>Implementing Disaster Risk Reduction Plans</b></p>	<p><b>3. Communities Take Action to Reduce Risk of Disaster in their Communities</b> The Committee leads the process of implementing preparedness and mitigation activities targeting regional, community and household resilience. Local faith organizations and communities review and revise plans every 12 months.</p>
<p><b>Responding to Disasters</b></p>	<p><b>4. Short and Long-term Community Needs Addressed in Disaster Response</b> Communities plan for both short-term needs, such as food and water, and long-term needs such as restoring essential health services and water systems. All response activities include resilience-building so that communities can better withstand and recover from future disasters.</p>

# Sri Lanka DRRM Case Study: Other Churches Adopted the Approach

- To date: Faith communities have mobilized 13 ecumenical institutions & 7 regional ecumenical committees
- Church networked with disaster management committees, other faith groups and civil society organizations



# Sri Lanka DRRM Case Study: Mobilizing government & other stakeholders



# Sri Lanka DRRM Case Study: Local Impact & Learnings

- Impact
  - Fr. Mano's video
  - Village-level ripple effects: tree planting, water systems, peace and reconciliation
  - 2017: severe disasters but all locally funded



# Sri Lanka Case Study: Local Impact & Learning

- Learning
  - Successes: social cohesion, ecumenical and interfaith relations, social development
  - Opportunities: consistent application, energetic leader, slower process
  - Model: replicable, asset-based relief responses

# Sri Lanka DRRM Case Study



# Thank You

Nagulan Nesiiah  
nnesiah@episcopalrelief.org

Additional information:

<https://www.episcopalrelief.org/where-we-work/country/sri-lanka>

Comments &  
Questions?





# Join the JLI Mobilisation Hub

[jliflc.com/user-registration](http://jliflc.com/user-registration)

## Stay in touch!

JLI Knowledge Manager

[stacynam@jliflc.com](mailto:stacynam@jliflc.com)

JLI Research Director

[olivia@jliflc.com](mailto:olivia@jliflc.com)

Thank you!