

---

# ICM – Evidence Working Group Presentation

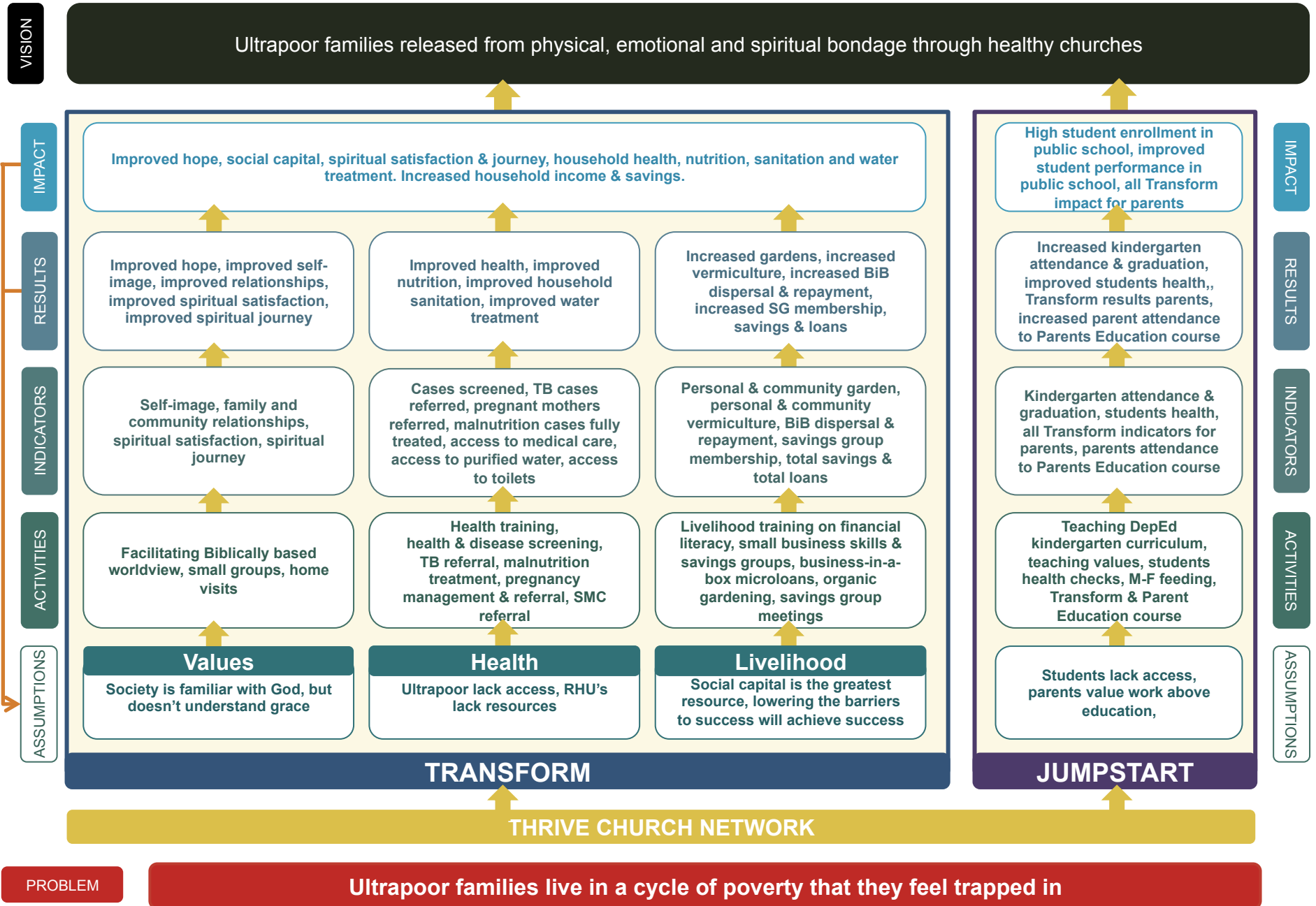
Lincoln Lau, Director of Research  
International Care Ministries

---

*April 28, 2016*

## International Care Ministries (ICM)

- Non-profit organization based in the Philippines
- Vision: "To release families living in ultrapoverty from physical, emotional, and spiritual bondage"
- Core program: 16-week community-based intervention called *Transform* that targets households living in ultrapoverty (*i.e. living on < \$0.50 USD per person per day*)
  - Program consists of lessons in three broad themes
    - A. Values
    - B. Health
    - C. Livelihood



## Data at ICM

- Our aim is to be a data-driven organization
- Data is broadly categorized into: 1) Monitoring, 2) Evaluation, & 3) Learning

### *Monitoring*

- Participant attendance, dropout, graduation, recovery, savings, etc.
- Distribution of food, medicines, materials, etc.

### *Evaluation*

- All participants are screened for poverty prior to the start of the program (propensity scoring)
- Households are surveyed before and after *Transform*
  - Survey covers a variety of topics (e.g. social capital, income, savings, hygiene practices, food security, etc.)
  - A subset are surveyed 6, 12, 24 & 36 months post-intervention
  - Over 200,000 surveys have been administered by ICM in the last 4 years

## Data at ICM

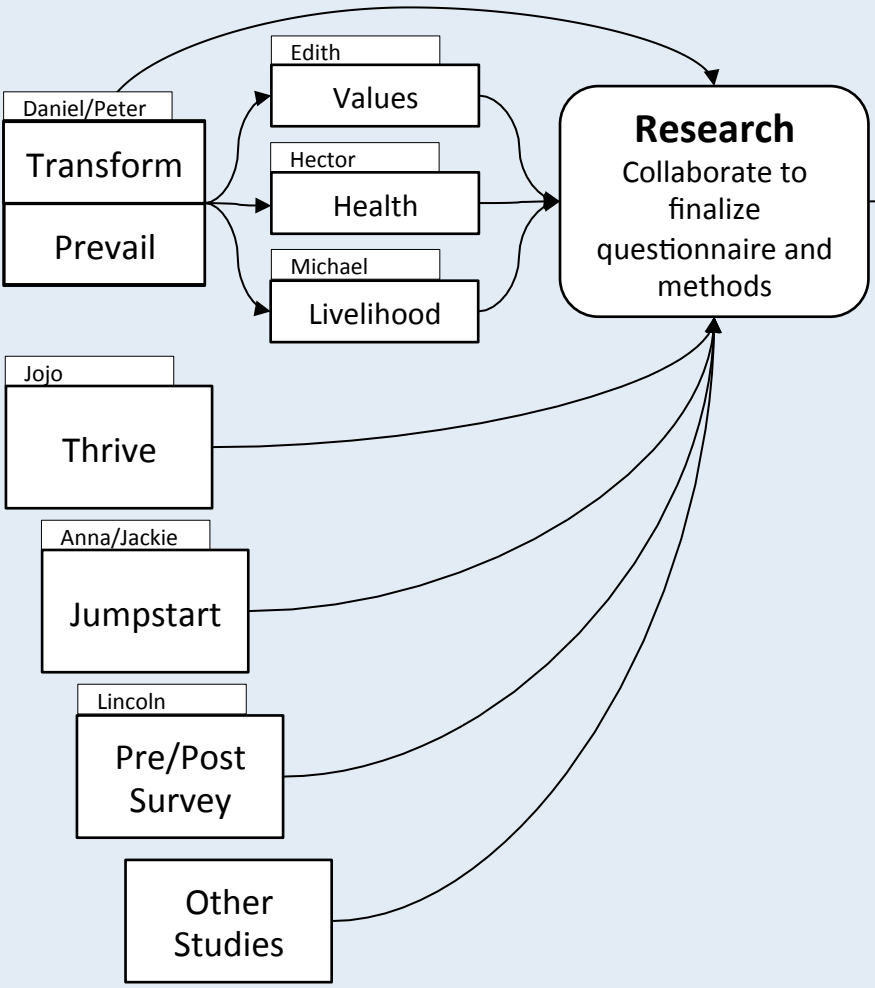
### *Learning*

- Studies designed to address specific gaps in knowledge and research needs
  - *Examples:*
    - How does the education level of our trainers affect program effectiveness?
    - The relationship between baseline social capital in households and success of child feeding
    - Values taught informally vs Values taught formally, a randomized controlled trial

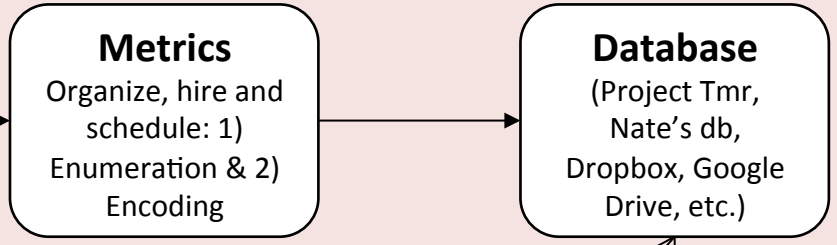
### *The Role of the Research Department*

- In addition to organizing research projects (internally and with partners), to assist operations and individual departments (Values, Health, Livelihood, Education) in integrating data and research in the management of activities
  - Specifically, the design of 'Evaluation Frameworks'

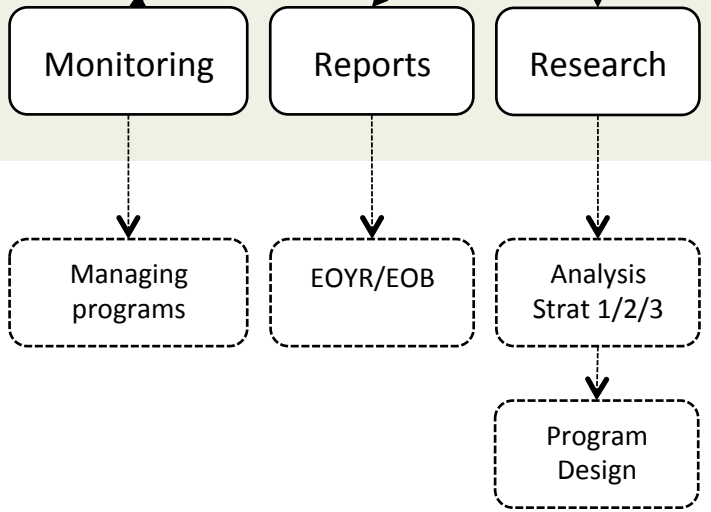
**DESIGN EVALUATION FRAMEWORK/SURVEYS**



**DATA COLLECTION & QUALITY**



**ACCESS & DATA SYSTEMS**



## Randomized Controlled Trials (RCT) at ICM

- Main study in partnership with Innovations in Poverty Action (IPA)
- Internal RCTs were also conducted to pilot the logistics, and collect data

*Purpose:* To produce high quality evidence around program outcomes

### Religious Variables/Indices

- The faith-based element of ICM's Transform program is also being studied as one of the outcomes. These are grouped into a number of indices:
  1. Intrinsic Religion
  2. Extrinsic Religion
  3. General Religion
  4. Religious Knowledge
- Other indices potentially relevant to faith-based organizations:
  - Life satisfaction (Kessler psychological scale), Trust, Community Activities, Powerful Others, Locus of Control, Life Orientation, Optimism, Grit, Self-Control

## Lessons Learnt & Challenges

- As a data (indicator) driven organization, how do we factor in spiritual/ faith-based elements that all stakeholders can agree upon?
- Need to start somewhere – collect data (lots of piloting is ok)
- Use list randomization for sensitive questions
- *Analysis.* We observe change in many variables and indices, however identifying the causal pathways of these changes is a challenge
- *Creativity.* It has been necessary to be creative in study design and methods to implement studies which isolate specific interests as a faith-based organization without being contextually inappropriate



