

Evidence Working Group Meeting: Comparative review of methodologies

Call Document: March 24, 2016

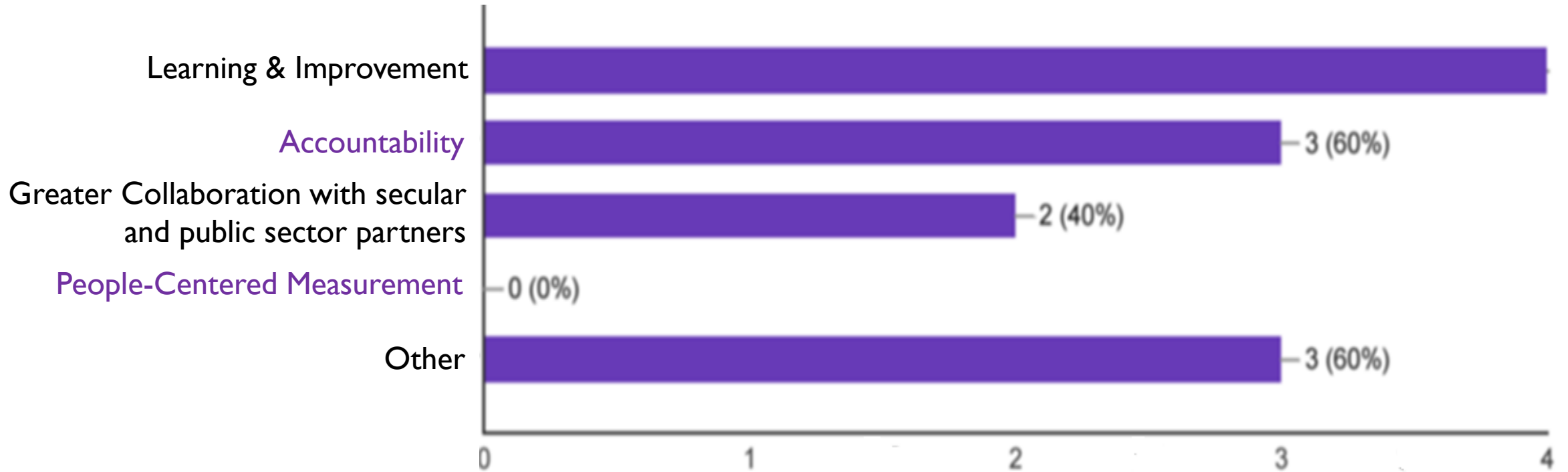


Partnership for Faith & Development
Multi-faith Collaboration for the Common Good

Different aspects of evidence to think about when comparing

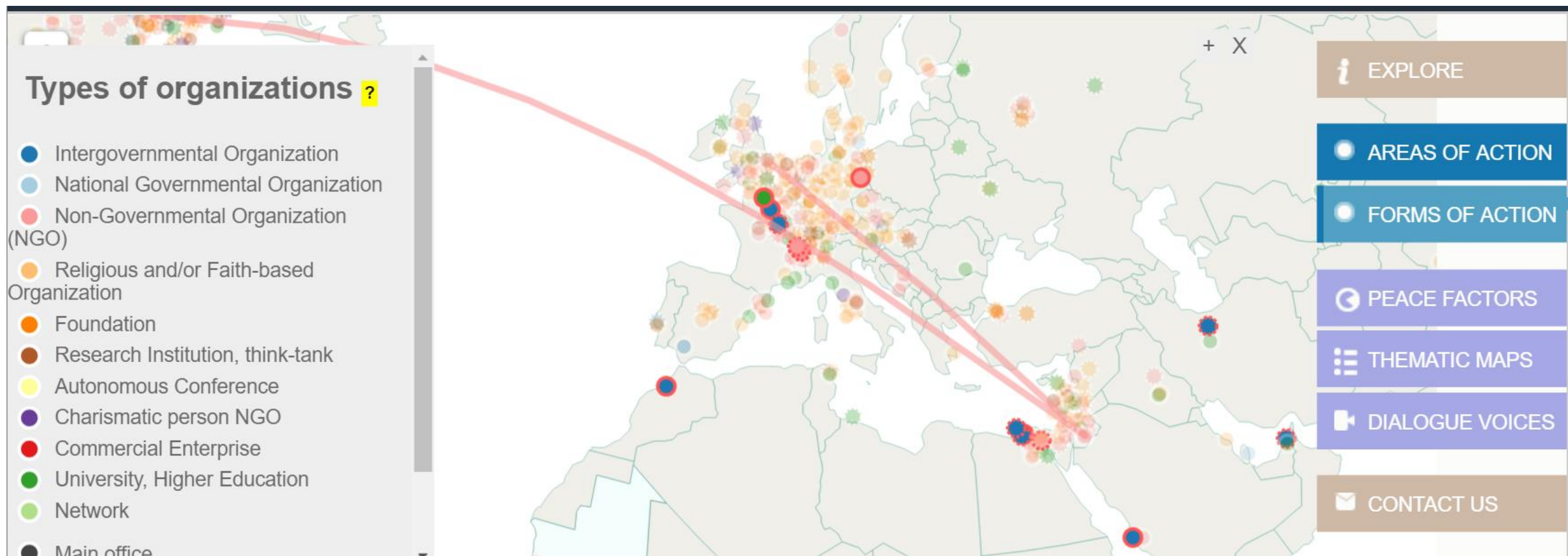
- Purpose of evidence gathering?
 - Mapping vs Evaluating outcomes
 - Within mapping: Assets vs Activities
- Project Methodologies vs Institutional Strategies
- Centralized vs Decentralized / Consistent vs As-needed
- High vs “low” tech
- Internal collection vs External collection

Organizations' rationale(s) for engaging with evidence



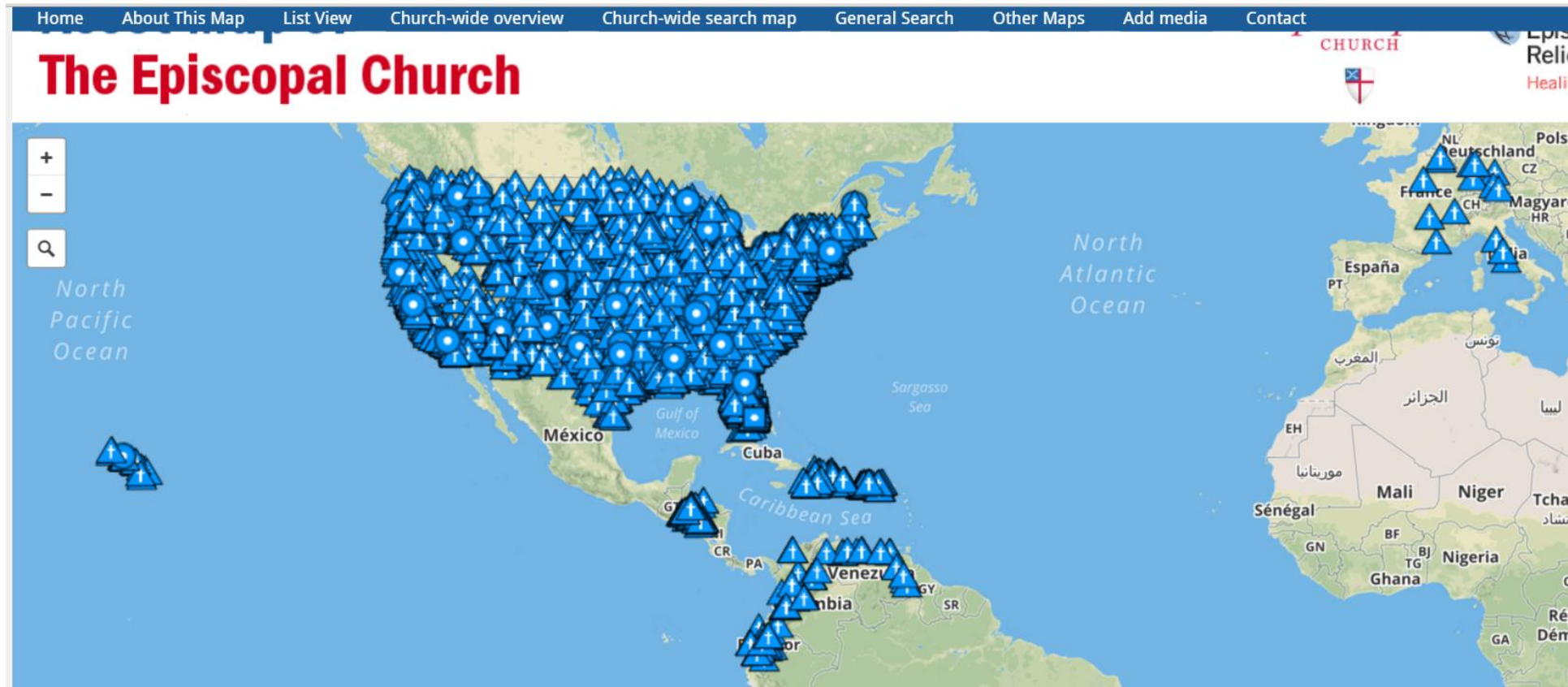
KAICIID Mapping of Interreligious Dialogue activities

- 400 organizations active internationally in the promotion of interreligious dialogue
- Map is searchable via Organization Type, Areas of Action, Forms of Action, Peace Factors...
- <http://jliflc.com/resources/kaiciid-mapping-dialogue-for-peace/>



Episcopal Relief & Development and the Episcopal Church – Asset Map

- Crowd-sourced, church-administrated, mapping effort shared by Episcopal Relief & Development and the Episcopal Church
- <http://ewg.jliflc.com/resources/asset-map-of-the-episcopal-church/>



Arigatou International – Mapping Strategies, and Mapping of Prayer & Action Project

- Summary Paper of Mapping Strategies & Comparative Table of strategies: <http://jliflc.com/resources/arigatou-international-overview-of-different-types-of-evidence-synthesis-mapping-scoping-and-participatory-methods-of-demonstrating-and-visualizing-outcomes/>

Example: Nepal's faith based organization works with NGOs and others to offer year-round programs and activities that attempt to intervene in the causal relationship among poverty, gender discrimination, inequality, marginalization and everyday violence against children.

Activities:

- The Nepal project educates populations, including, for example, indigenous Bon religious leaders in remote parts of the country, about the negative effects of child marriage.
- It also **offers scholarships to girls** to help them to stay in school. Special educational programs, (scholarships, homework help, vocational skills training, etc.), are offered to help girls to build confidence and become empowered to know their rights.
- Programs are structured in ways that enhance children's emotional and cognitive development.

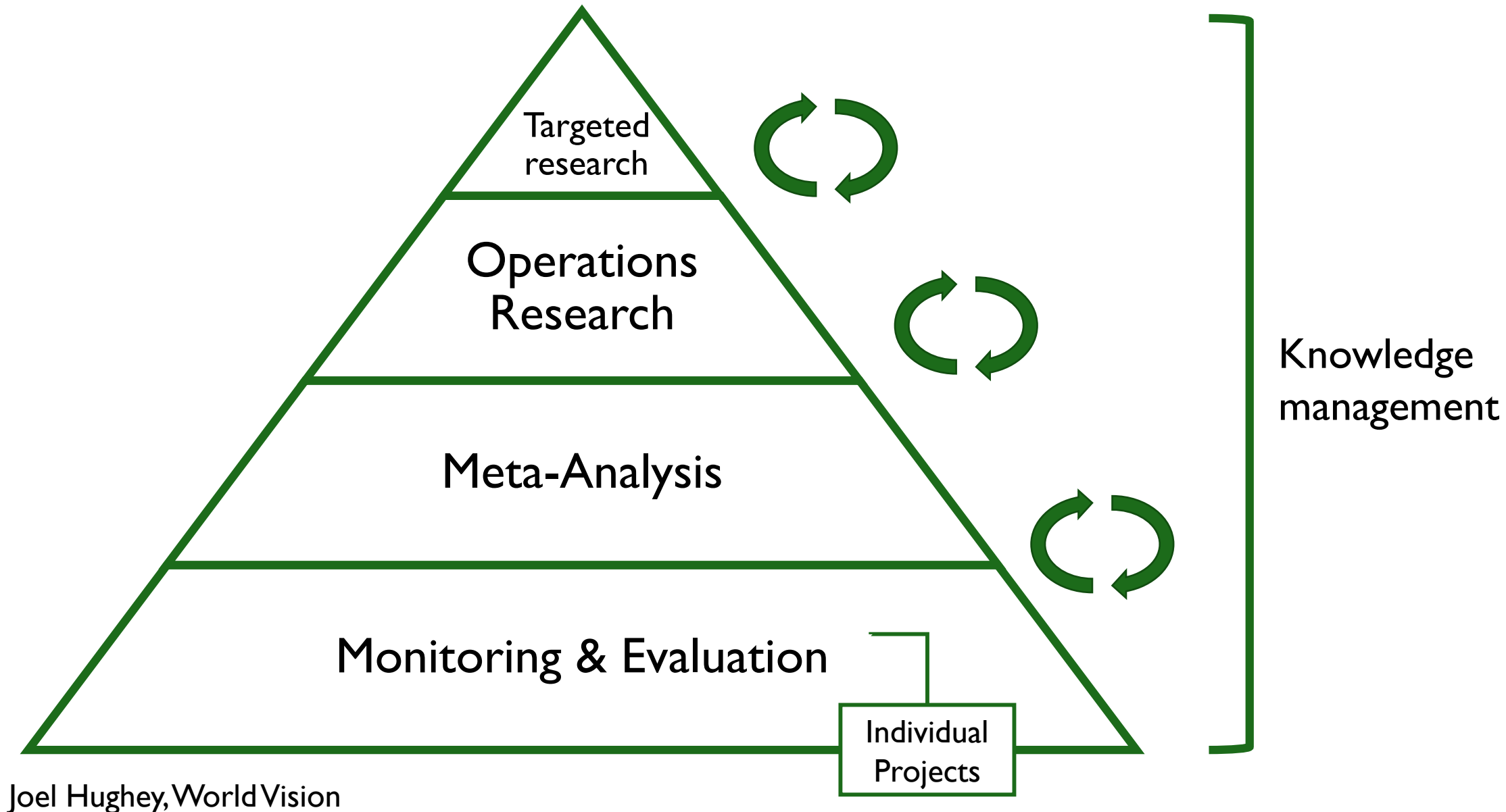
Short-term Outcomes:

- (1) Increased knowledge among religious and secular populations about negative aspects of child marriage-- for the child, the family and the community.
- (2) The number of girls who received scholarships each year, who entered, remained in high school, and obtained employment, thereby, forestalling marriage until girls were physically and emotionally able to bear and parent children.

Submitted by Arigatou International: Overview of Different Types of Mapping, Scoping and Synthesis

Method and Timeline to Produce Evidence	Aim	Data Inclusion	Search-included Evidence	Critical Appraisal of Evidence	Data Extraction	Analysis	Presentation Visual or report	Access to User Friendly summaries/ narratives	Who conducts— participates in data collection process
<i>Evidence Gap Maps</i> <i>Expensive</i> <i>Several months</i>	Map and visualize existing ongoing Systematic Research and evidence in particular topic area. Informs policy & practice	Systematic Reviews, Impact Evaluations, Gap maps	Comprehensive and systematic for systematic reviews. More purposive for Impact Eval.	Yes-rigorous critical appraisal of evidence:	Intervention, outcome measures, summary of findings, critical appraisal categories	Summary of quality/quantity of evidence. Descriptive summary of key findings of systematic reviews	Visual 2-dimensional framework. Links to a database with summaries of the indicated studies	Yes	One or a team of Experienced Researchers-
<i>Scoping</i> <i>Costly— up to one year</i>	Examine extent, range and nature of research activity- identify gaps in evidence, determine if full-systematic research should be undertaken. Informs policy & practice	Determined by research question: All relevant literature includable	Determined by time and resources May be more limited	Can do	Population, intervention, outcome measures study design. May include findings re: effectiveness and gaps in research	Analytic framework or thematic construction- Narrative account of existing literature. Descriptive thematic narratives; summaries of statistical data.	Report – may include tables	No	Team of Experienced Researchers
<i>Rapid Assessments</i> <i>Quicker, less cost</i>	To quickly obtain feedback on activities and outcomes in the field. Informs practice— mid course corrections ie. to improve quality, timeliness, and low cost	Responses to surveys, narratives from field, statistical data-Uses mixed methods	Can be systematic- but limited Can do impact evaluations/ effectiveness	Not rigorous critical appraisal Based on staffs analytical experience	Population, activities, outcome measures	Summarizes characteristics of studies e.g. design, population, context, outcomes. Analyzes results Short term Analysis and assessment of issues as data is collected	Report. Can do mapping with links to narratives	Yes-useful for program staff –mid course corrections	Evaluator working with program staff- sometimes input from other stakeholders
<i>Participatory Pathways Analysis</i> <i>quick</i> <i>less cost-</i>	To assist staff and stakeholders to make strategic programmatic and advocacy strategies	Information	Network questionnaire	Info on networks who may help or hinder program or strategies	Local, regional, national level networks--	Grassroots groups involved with staff in identifying and articulating power structures and obstacles	Visualizations of findings	Yes-useful for program staff to plan strategies; visibility; mobilization	Program Staff and other stakeholders (community participants, beneficiaries, etc.)

Example of Organization-wide Engagement with Evidence – World Vision



United Religions Initiative Evaluation Framework

URI – network of grassroots, interfaith peacebuilding groups called Cooperation Circles (CC) in 94 countries

Structure – CCs are decentralized network of autonomous groups. URI as an organization provides direct support and interconnection to its network of CCs. URI's organizational arm also influences policy makers to embrace and institutionalize the values of interfaith peacebuilding.

Challenge – how to measure impact of a decentralized network of autonomous groups

- Impact of networks or social movements is very much uncharted territory with a limited body of work
- Understanding Impact at three levels (and according to the purpose of each level) – individual CC level, network level, and organizational level

<http://jliflc.com/resources/uri-impact-evaluation-framework/>

Helpful resources shaping URI's narrative-based impact assessment

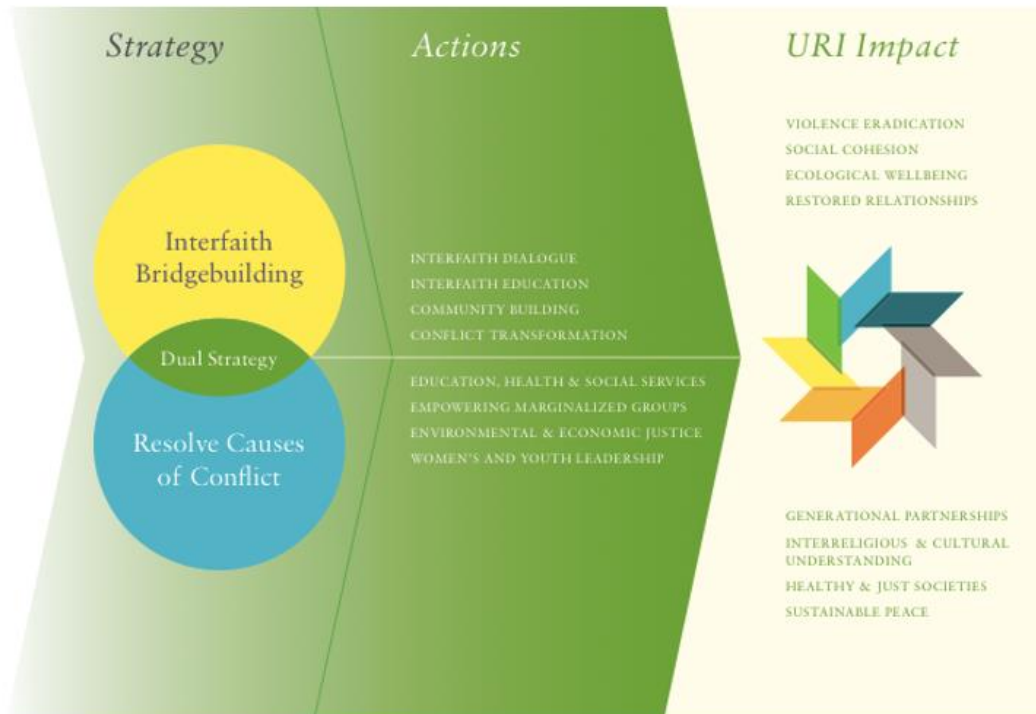
1. URI narrative impact evaluation incorporates work on
 - Lean Research – **Rigorous, respectful, relevant, and right-sized** research in development
 - <http://ewg.jliflc.com/resources/lean-research/>
2. Work on global learning and intercultural knowledge assessment undertaken by the AAC&U (the Association of American Colleges and Universities.) Global Learning Leadership Council has developed rubrics for measuring learning outcomes.
 - <https://www.aacu.org/value/rubrics/intercultural-knowledge>
3. Wellesley College - Coding of narratives to assess learning outcomes
 - <http://web.wellesley.edu/NECASL/index.html>

URI – Narrative Based Impact Assessment <http://jliflc.com/resources/uri-impact-evaluation-framework/>

Close examination of organizational strategy

FIGURE 1: Transformation through CC dual strategy and URI organizational actions

Cooperation Circle: Strategy, Actions and Impact



CC level: In their respective communities, what impacts are individual CCs generating through the activities they are carrying out? How is being a member of URI increasing CC impact?

Example Indicators:

- Reduction in interreligious/intercultural violence
- Increase in # of initiatives from community groups to address inter-religious issues led by CCs
- Media promotes tolerance (positive stories of inter-religious cooperation, reduced use of stereotypes, voices of minority groups heard)
- Communities celebrate each others' religious and/or cultural holidays and events through CC sponsored events
- Religious leaders engaged in dialogue through CC sponsored events
- Establishment of inter-religious council to resolve disputes through CC sponsored activities
- Children from different faiths/cultures play together
- Tolerance for building of religious shrines in communities where majority are of other religion

Means of Verification

- Analysis of CC Profiles
- Impact reports by CCs
- Observation reports by URI ground staff
- Coding of CC stories using **narrative assessment coding**

IMA World Health

Response to survey question: <http://jliflc.com/resources/ima-world-health-survey-response-organizational-engagement-with-evidence/>

- Strong & detailed M&E frameworks using robust data capture processes to monitor progress and enable adaptive projecting
- Use electronic and mobile data capture systems, as well as paper-based processes
- M&E data feeds directly into national Health Management Information Systems databases
- On-going performance monitoring allows team leaders to work with their technical support teams to determine success of individual activities and the impact of project on priorities, and make course corrections as needed
- Evaluation by IMA HQ and project staff – qualitative and quantitative assessments

The Salvation Army - Unifying Framework for Measurement

- <http://ewg.jliflc.com/resources/the-salvation-armys-impact-measurement-initiative/>
- Aim: The Impact Measurement Initiative set out “to increase the transformative change The Salvation Army works towards with people and communities through measurement and learning. This will be achieved by improving the quality and effectiveness of Salvation Army programmes around the world by measuring progress towards a shared purpose using a unifying framework for results measurement and learning.”
- Measuring seven People outcomes
 - Four contextual: Safety/Protection, Well-being/Health, Service/Work, Formation/Education
 - Three relational: Faith & Trust, Hope, Love
- Implementation:
 - Document outlining data collection guidelines
 - Data storage and analysis for relational and contextual tools
 - Guidance documents for measurement experts within the Salvation Army

International Care Ministries

- Impact Assessment through Randomized Controlled Trials
 - 40 million data points
- Comparative cost-effectiveness studies

ICM's faith-based program, working with the ultra-poor in the Philippines, generates nearly 50x return on investment compared to secular poverty graduation programs

10min Video of ICM's work & impact:

https://www.youtube.com/watch?v=M5ECIV2W_4E

	Graduation Program						ICM	
	Ethiopia	Ghana	Honduras	India	Pakistan	Peru	ICM-VHL	ICM-HLV
Total Costs	\$3,591	\$4,672	\$2,670	\$1,257	\$5,150	\$4,960	\$76	\$80
Year One Consumption	\$451	\$293	\$66	\$344	\$613	\$339	\$361	\$390
Rough Return on Investment	13%	6%	2%	27%	12%	7%	475%	488%

Global Delivery Initiative

- Global Delivery Initiative – Case Study Methodology
- Capture implementation knowledge from operations – the staff who are involved in designing and implementing development interventions – and give practitioners access to insights about how others have confronted issues of delivery.
- Case study series is intended to inform the work of development practitioners worldwide.
- Detailed case study methodology:
<http://www.worldbank.org/reference/GDI/pdfs/Guidelines24September.pdf>

Evidence Working Group Follow up Questions for Discussion

- Advantages and disadvantages of the different approaches and strategies
- Future EWGs: Helpful for a deeper dive into organization's engagement strategies with evidence?
- What are entry-level next steps for an organization in preparation to begin collecting data and evidence?
 - What questions should an organization be asking?
 - Fitting the evidence purpose with the evidence type/strategy?